

USDA (840) EID Cattle Ear Tags

Customization Options

Last 5 AIN



Sequence



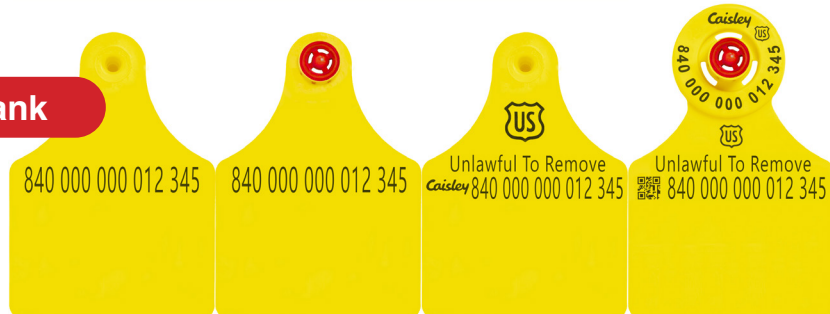
Text Top Sequence Bottom



Sequence Top Text Bottom



Blank



With Tissue Collection Unit

- **No-fuss DNA sampling**—tissue collection units combine an electronic ear tag with the functionality of taking a genetic sample—in one simple step!
- **Saves time and resources!** Each tissue sample contains a large quantity of DNA, ensuring superior lab results with minimal retesting.
- **Designed for clean and uncontaminated sampling,** the collection unit is fully sealed and clearly identified with matching Animal ID on the tube and ear tag.

