

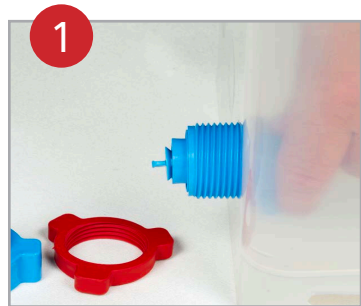
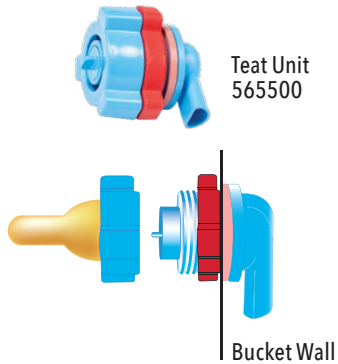
How to attach Easy Clean Bucket Teat Units

Buckets with pre-drilled holes

We'll drill 1.5" diameter holes in your bucket.

If you decide to drill your own holes

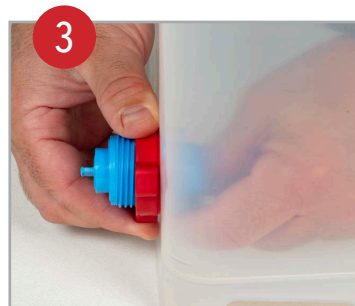
The hole should be 1.5" diameter, and 0.5" up from inside bottom of the bucket.



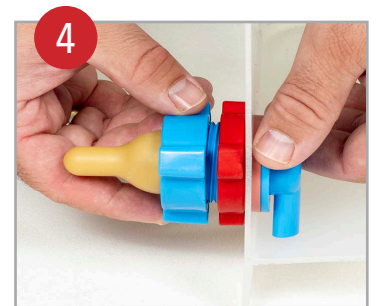
1 The Teat Unit will be pre-assembled. Unscrew the Outer Nut and Locking Nut. Reach inside the bucket and insert the Teat Unit.



2 Hold the Teat Unit (inside the bucket) and screw on the Locking Nut.



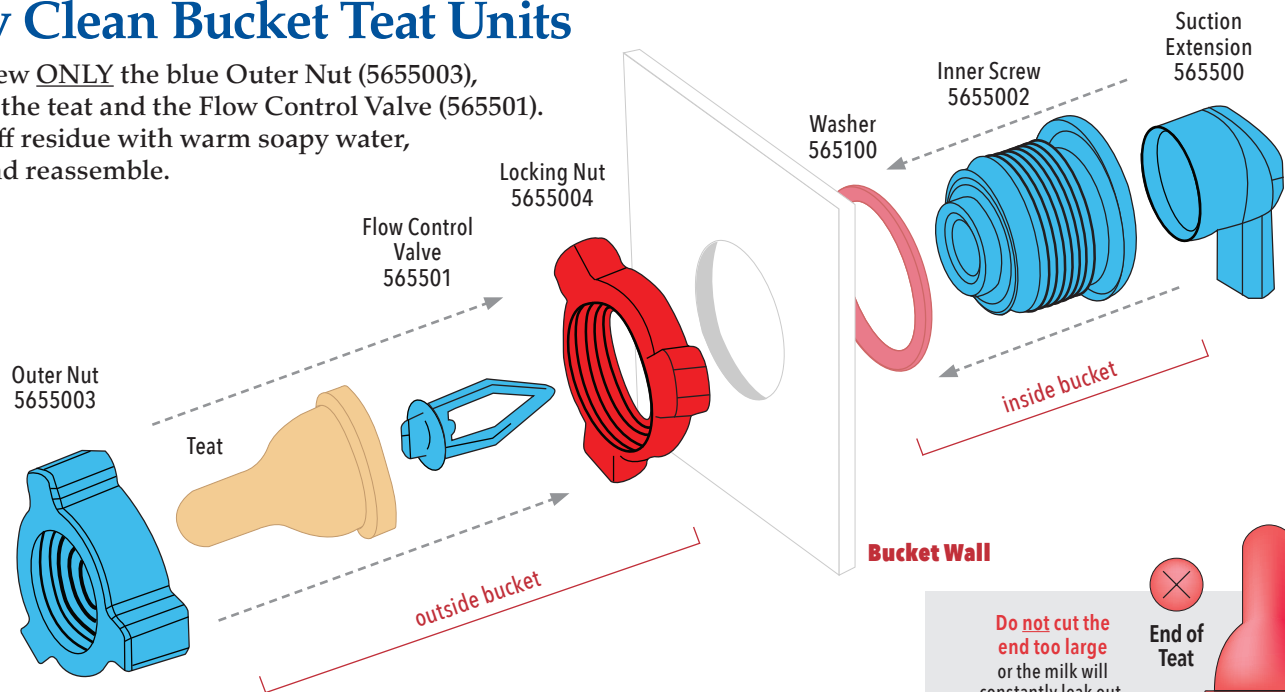
3 The Suction Extension should be oriented downward, at a slight angle before tightening the Locking Nut.



4 Insert the Teat into the Outer Nut and screw into place.

How to clean Easy Clean Bucket Teat Units

Unscrew ONLY the blue Outer Nut (5655003), remove the teat and the Flow Control Valve (565501). Clean off residue with warm soapy water, rinse and reassemble.



Do not cut the end too large or the milk will constantly leak out.



End of Teat

Milk flow too slow?

Take a Pocket Scalpel (or sharp knife) and enlarge the "X" slit in the end of the teat.



premier1supplies.com

800-282-6631

© Copyright 2024 Premier1Supplies. All rights reserved.